

CONCEALED SOLUTIONS & FLUSH PLATES



A Specialist at your service for over 75 years.

Founded in 1947, Siamp designs and manufactures innovative sanitary products for the bathroom environment:

Wall hung solutions, Flush plates, Flushing technology, Cisterns and Toilet seats. Whether it's a commercial project or the renovation of a domestic bathroom, Siamp has the solution.

Pioneer of the plastic toilet seat and now a global leader of flushing technology, SIAMP is the brand chosen by leading ceramic manufacturers to provide flushing solutions throughout the world.

Besides the head office based in Monaco, SIAMP is present across 5 continents through a network of 9 sales subsidiaries, 7 production sites and hundreds of distributors, for the benefit of millions of users.

To remain a sanitary specialist in this evolving market, we invest in innovative technologies to develop new products and perfect the efficiency of manufacturing.

Understanding the importance of water sustainability, SIAMP continues to develop technical solutions to protect this resource for future generations. SIAMP is regularly at the forefront of innovation recognised by a large number of international patents.



INTERNATIONAL PRESENCE	4
OUR PROJECTS	6 - 7
CASE STUDIES	8 - 9
WC FRAMES	10
INGENIO WC FRAMES	11
INGENIO WC FRAMES LOW HEIGHT	12
INGENIO CONCEALED CISTERN	13
WC FRAMES TALL	14
CONCEALED CISTERNS	15
FLUSH PLATES	16 - 21
BATHROOM ACCESSORIES	22

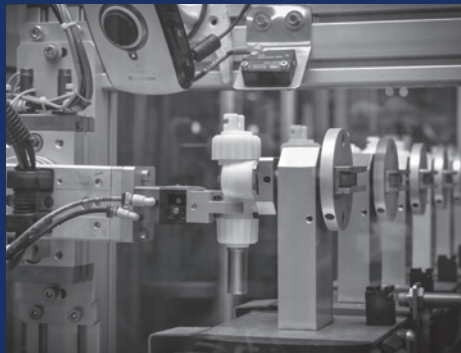
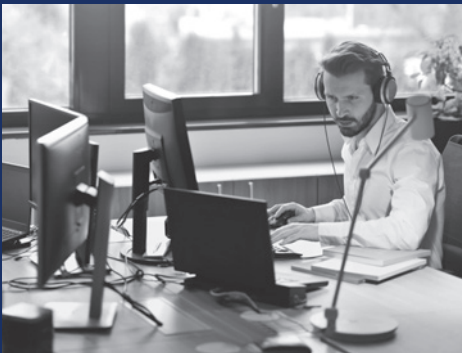


INTERNATIONAL PRESENCE

SIAMP IS PRESENT THROUGHOUT EUROPE,
AND WORLDWIDE.



INNOVATIONS - SOLUTIONS - QUALITY CERTIFICATION
SUSTAINABILITY - CUSTOMER SERVICE.



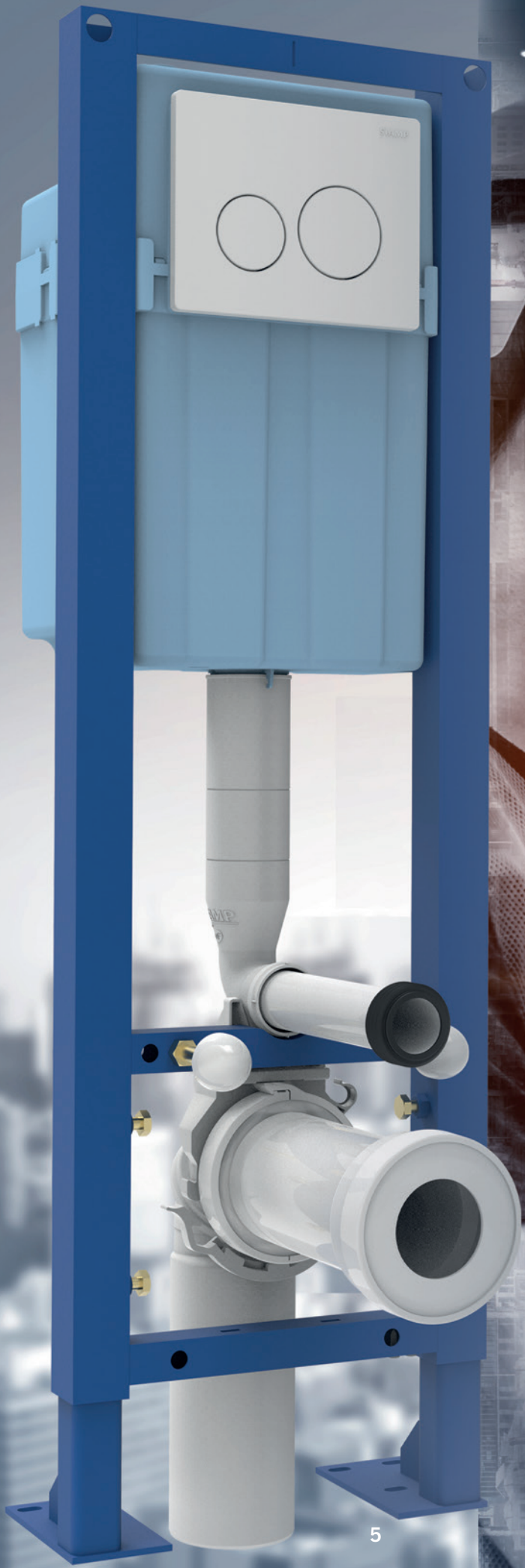
SIAMP is the origin of many innovations in the world of toilets and puts all its resources into designing and manufacturing innovative eco-efficient solutions that guarantee hygiene, comfort and responsible water management.

Our products are designed and developed in order to meet the most demanding international standards along with voluntary certification schemes.

All SIAMP products are subjected to rigorous and intense tests, using our own, and third party test laboratories; Our WC frames are subjected to loads of 400 kg and our flushing systems to 200 000 repetitive performance and endurance tests.

Confident our products will exceed your expectations we offer generous guarantees for peace of mind.

WC Wall frames - 10 Years
Concealed Cisterns - 10 Years
Flush Plates - 2 Years



OUR PROJECT EXPERTISE

A TRUSTED PARTNER RECOGNISED BY THE ENTIRE INDUSTRY.

With more than 75 years of experience in sanitary equipment, SIAMP uses its technical and commercial know-how to support all stakeholders in the building industry, from the project owner to the end user. This expertise, combined with the reliability of our products, is recognized through national references with many major players in the building industry

SIAMP PROJECTS

Offices, Sports, Education, Tourism & Leisure, Health, Residential



Ropemaker Place - Liverpool



Îlot Beaumont - Rennes



Eliot House - London



Tour Hekla - Paris la Défense



Friary Park - London



North Hale Quay - Hayle



Royal Eden Docks - London



Résidence de tourisme - Presqu'île de Giens



Hex Hotel - Doncaster



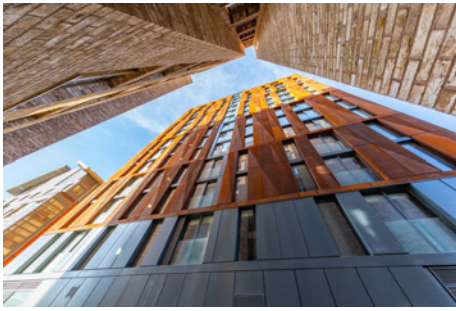
Les Allées royales - Saint Cyr sur Loire



Testimonio - Monaco



Fulwell Bus Depot - London



Oxide House - Manchester



Danum House - Doncaster



CHU de Reims - Reims



Palais des Sports - Caen



Îlot Beaumont - Rennes



Hinkley Point - Bridgewater



Tour Hekla - Paris la Défense



Wardrobe Hotel - London



Adagio Hotel - London



Hôtel Akena - Niort



Résidence de tourisme - Presqu'île de Giens



Centre commercial McArthurGlen Paris Giverny - Douains



The Black Bull - Sedbergh



Îlot Beaumont - Rennes



Grand Hotel - Birmingham

CASE STUDIES

NELSONS YARD ▶

Sector: Residential
Location: York
Client: Northminster
Contractor: MJM Mecjanical Services
Merchant: James Hargreaves
Product: BCM790, Reflet 90 White
Flush Plate

'A high quality development of townhouses arranged around a secure courtyard, which was subsequently shortlisted for the 2017 Northern Design Awards.'



◀ THE FLOWERBOWL ENTERTAINMENT CENTRE

Sector: Leisure
Location: Preston
Client: Barton Grange Group
Contractor: Ameon
Merchant: Cu Plas Supplies
Product: BCM350, Smart IR Flush Plate
(Customised with client brand logo)

'An exciting unusual leisure complex, offering a range of exciting activities under one grass-covered roof.'

THE SOAPWORKS ▶

Sector: Offices
Location: Salford
Client: The Soapworks
Contractor: NG Bailey
Merchant: G.R. Hullocks
Product: Intralim B, Smarty Chrome
Flush Plate

'A stunning transformation of the former Colgate Palmolive factory providing over 100,000sq. ft. of office space.'



CLAYTON HOTEL ▼ CITY OF LONDON

Sector: Hotel
Location: Aldgate, London
Client: Dalata Hotel Group
Contractor: Closewood
Merchant: Utopia Projects
Product: BCM350, Reflet
90 Black Flush Plate

'Clayton City of London hotel is a 4 deluxe hotel comprising of 212 luxury bedrooms, inspired by the Victorian textile warehouses.'*



STOCKPORT ▼ EXCHANGE

Sector: Offices/Mixed Use
Location: Stockport
Client: Muse Developments
Contractor: A&B Engineering
Merchant: Cu Plas Supplies
Product: BCM350,
Smarty Chrome Flush Plate

'A phased mixed development scheme which will deliver 370,000 sq. ft. of offices.'



WC FRAMES

Wall hung toilets help create a luxurious look whilst providing many practical benefits.

Practical use of space - having the toilet suspended introduces space by having more floor surface exposed, making the room feel larger.

Easy cleaning - the suspended toilet means the floor is clear of any obstacles when cleaning, additionally all the pipework is concealed in the wall so there are no dust traps to gather dirt.

Accessible - the height of the toilet bowl can be raised for comfort or to aid the less-abled.

CHOOSING YOUR WC WALL FRAME

Choose from three types of wall frames - tall height frame, low height frame, slim frame.

Tall height frames have a height adjustment of between 1.1m - 1.3m. Designed to be used where there are no height restrictions. The flush plate is located above the toilet seat when open.

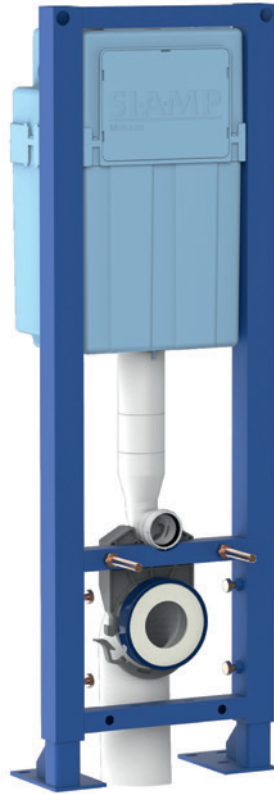
Low height frames have a height adjustment of between 0.79m - 0.99m. Designed to be used where there is a height restriction such as a window or low studded wall with a work surface. The flush plate is positioned behind the toilet seat which must be closed to operate the flush, leaving the toilet presentable for the next user.

Slim frames are full height with adjustment of between 1.11m-1.21m. Designed to fit into a tight space with a minimum installation depth of 100mm when the waste is exiting the wall directly behind the frame, and a minimum of 123mm when the waste is exiting left, right or vertically through the floor. The flush plate is located above the toilet seat when open.





▲ Wall fixing



▲ Self-supporting



INGENIO



DESIGNED FOR THE PROFESSIONAL INSTALLER

Fast installation

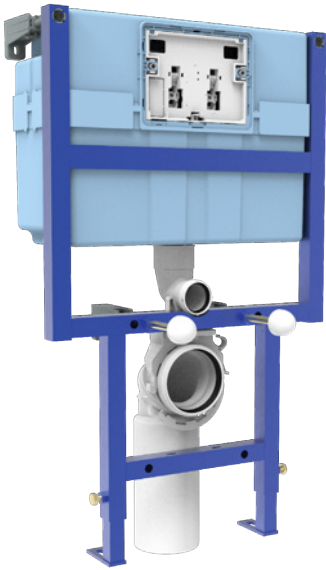
- Wall fixing or Self-supporting structure - load bearing to 400kg
- Feet delivered in the installation position
- Self-braking vertical adjustment for precise height setting
- 6/4 litre dual flush, on site adjustable to 4/2.6 litre
- WRAS approved delayed fill inlet valve
- Mechanical flushing
- Insulated cistern with protection against foreign bodies
- Secure water connection inside the cistern, built-in isolation valve accessible through flush plate
- WC connection kit supplied separately ready for the second fix

Height: 1100mm - 1300mm

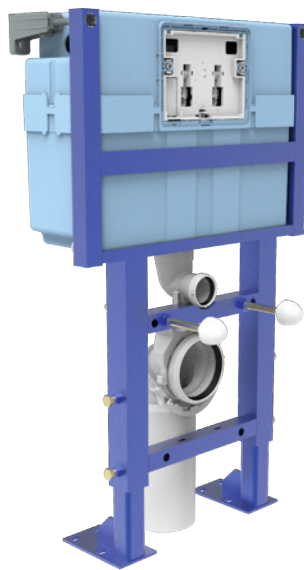
Width: 350mm

Depth: 147-245mm

INGENIO WC WALL FRAMES LOW HEIGHT



▲ Wall fixing



▲ Self-supporting

INGENIO 790

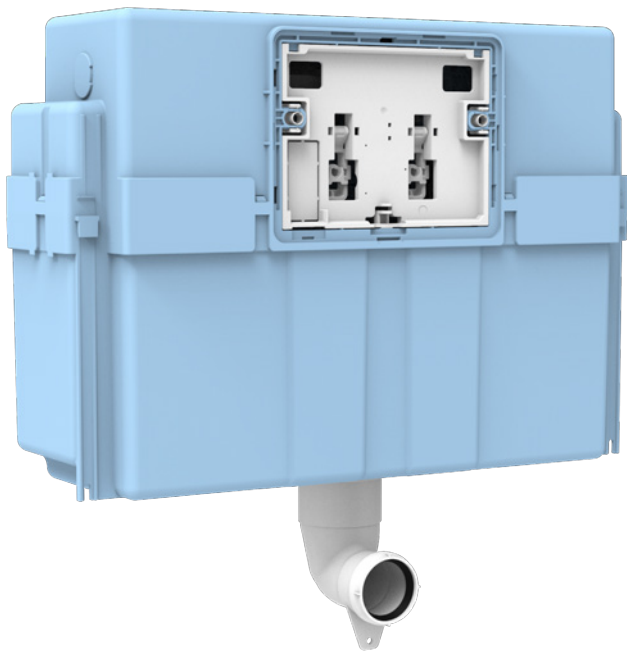


DESIGNED FOR THE
PROFESSIONAL INSTALLER

Fast installation

- Wall fixing or Self-supporting structure - load bearing to 400kg
- Feet delivered in the installation position
- Self-braking vertical adjustment for precise height setting
- 6/4 litre dual flush, on site adjustable to 4/2.6 litre
- WRAS approved delayed fill inlet valve
- Mechanical flushing
- Insulated cistern with protection against foreign bodies
- Secure water connection inside the cistern, built-in isolation valve accessible through flush plate
- WC connection kit supplied separately ready for the second fix
- Height 790-990mm
Width 502mm
Depth 150-245mm



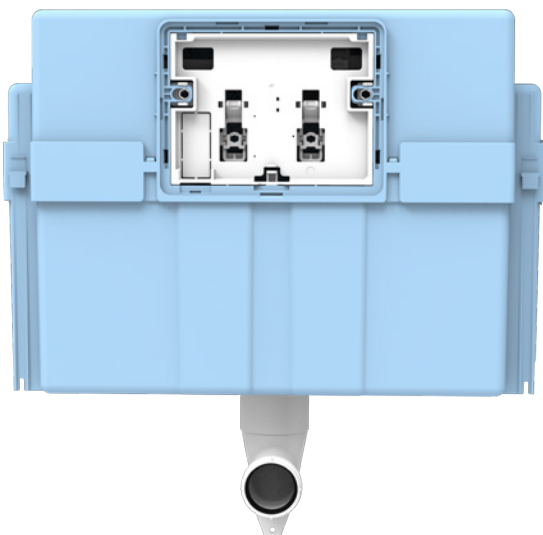


INGENIO CC790

DESIGNED FOR THE
PROFESSIONAL INSTALLER

Fast installation

- Designed for wall installation
- Can be fixed to the wall using 2 fixing brackets
- 6/4 litre dual flush, on site adjustable to 4/2.6 litre
- WRAS approved delayed fill inlet valve
- Mechanical flushing
- Insulated cistern with protection against foreign bodies
- Secure water connection inside the cistern, built-in isolation valve accessible through flush plate
- Supplied with 90° outlet bend



WC FRAMES TALL & INTRASLIM



▲ BCM350
Wall fixing

▲ BCU350
Self-supporting



BCM350 & BCU350

TALL & COMPACT

- Wall fixing or Self-supporting structure - load bearing to 400kg
- 6/4 litre dual flush, on site adjustable to 4/2.6 litre
- WRAS approved delayed fill inlet valve
- Mechanical flushing
- 1/2" brass isolation valve
- Insulated to prevent condensation
- Access for maintenance through the flush plate
- Includes 90° drain connection kit

Height: 1100mm - 1300mm
Width: 350mm
Depth: 147-245mm



BCM INTRASLIM

SLIM FOR NARROW DEPTH INSTALLATION

- Wall fixing - load bearing to 400kg
- 6/4 litre dual flush, on site adjustable to 4/2.6 litre
- WRAS approved delayed fill inlet valve
- Mechanical flushing
- Secure water connection inside the cistern, built-in isolation valve accessible through flush plate
- Insulated cistern to prevent condensation
- Access for maintenance through the flush plate
- Includes 90° drain connection kit

Height: 1112mm - 1212mm
Width: 572mm
Depth: 100*-245mm

* minimum installation depth of 100mm when the waste is exiting the wall directly behind the frame



INTRASLIM

IDEAL FOR NARROW CAVITY INSTALLATIONS

- 6/4 litre dual flush, on site adjustable to 4.5/3 litres
- Supplied factory assembled for ease of installation
- WRAS approved delayed fill inlet valve
- Secure water connection inside the cistern, built-in isolation valve accessible through flush plate
- Choice of dual flush plates
- Access for maintenance through the flush plate
- Insulated to prevent condensation
- Reversible fixing bracket

CONCEALED CISTERNS



Intra comfort is designed for use with comfort height back to wall pans installed in furniture with a minimum height of 820mm

The water connection can be made from the left or right by simply reversing the cistern body.

Reversible



▲ Left



▲ Right

Typical example:
 Furniture height - 820mm
 Comfort WC height - 480mm
 Flushpipe inlet height - 430mm
 Flushpipe cut to - 90mm



INTRA COMFORT BOTTOM INLET

- 6/4 litre dual flush on site adjustable to 4/2.6 litre
- Water connection can be made left or right
- WRAS Approved Airgap valve
- 1/2" inlet connection
- Insulated and uninsulated versions available
- Front and top access for maintenance
- Height and depth adjustable flush pipe



INTRA COMFORT SIDE INLET

- 6/4 litre dual flush on site adjustable to 4/2.6 litre
- Water connection can be made left or right
- WRAS Approved Airgap valve
- 1/2" inlet connection
- Insulated and uninsulated versions available
- Front and top access for maintenance
- Height and depth adjustable flush pipe



Special finishes available on request

*Single flush and inclusive design raised buttons available



FLUSH PLATES

COMBINING ELEGANT DESIGN WITH RELIABLE FUNCTIONALITY

Our wide range of flush plates offer a variety of designs, materials and creative finishes to complement any bathroom.

CHOOSING YOUR FLUSH PLATE

Choose from a range of ABS, Wood, Glass or Metal.

ABS plates offer contemporary design in a range of popular finishes to co-ordinate with mainstream bathroom fittings.

ABS RANGES:

- Contactless
- Sphere
- Cut
- Pyramid
- Smarty
- Segment
- Square
- Media
- Moon
- Ying Yang

Creative decor plates allow you to stay on-trend with the latest home interior designs. Our Album range offers over 300 decorations with a selection of finishes and textures.

Glass plates provide a touch of elegance bringing light and depth into the room.

GLASS RANGES:

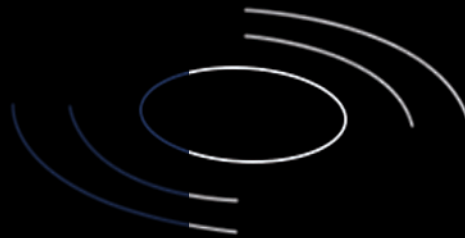
- Contactless
- Reflet 90
- Reflet 360

Metal plates are the perfect choice for high traffic public areas. Made from aluminum alloy and treated with an anti fingerprint coating these plates are easy to clean and robust.

METAL RANGES:

- Smart

SIAMP



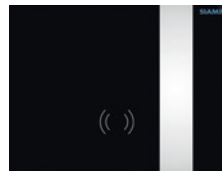
OUR RANGE OF AUTOMATIC FLUSH PLATES BRINGS GREATER HYGIENE AND COMFORT FOR THE USER.

ELEGANT GLASS DESIGN COMBINED WITH LEDS BRING COLOUR & AMBIANCE INTO THE ROOM

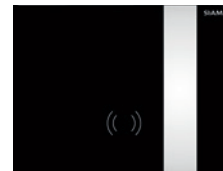
The flush plate automatically detects the user and regulates the flush depending on the duration of use.
 <90 seconds activates a half flush >90 seconds activates a full flush

CONTACTLESS GLASS

-  Colour changing LEDs



Black Glass LED 



Black Glass

CONTACTLESS



White



Bright Chrome

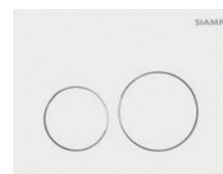


Black

SPHERE



Gold



White



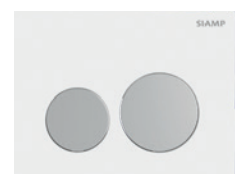
Matt Black



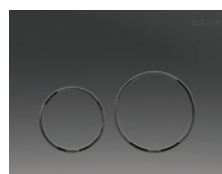
Rose Gold



White/Bright Chrome



White/Matt Chrome



Black Metal



Bright Chrome



Matt Chrome

CUT



White



Bright Chrome



Matt Chrome

PYRAMID



White



Bright Chrome



Matt Chrome



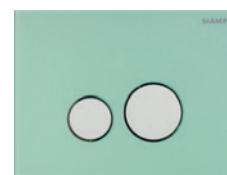
REFLET 360 GLASS



White/Matt Chrome



Black/Matt Chrome



Natural Green/Matt Chrome

REFLET 90 GLASS



White/Matt Chrome



Black/Matt Chrome



Natural Green/Matt Chrome

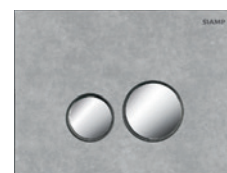
ALBUM 360 CREATIVE DECORS



Black/Bright Chrome



Natural Oak/Bright Chrome



Stone Grey/Bright Chrome

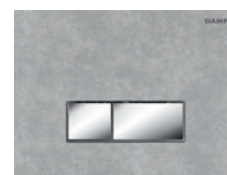
ALBUM 90 CREATIVE DECORS



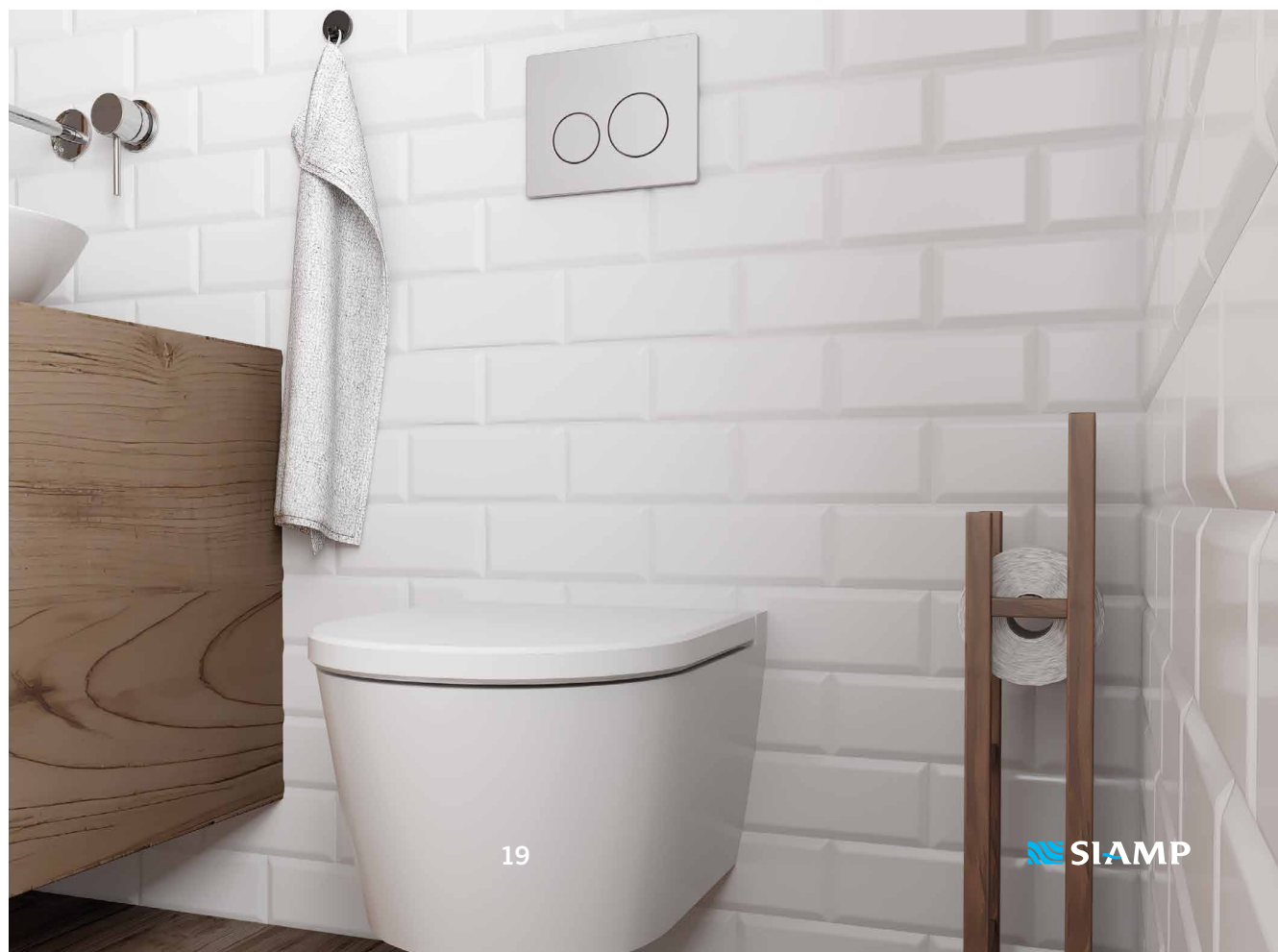
Black/Bright Chrome



Natural Oak/Bright Chrome



Stone Grey/Bright Chrome



FLUSH PLATES

SEGMENT

ABS

SEGMENTED BY DELICATE CHROME INSERTS



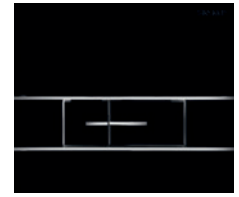
White/Bright Chrome



Stainless Steel/
Bright Chrome



Bright Chrome/
Matt Chrome



Black/Bright Chrome

SQUARE

ABS

TRUE SQUARE DESIGN WITH CHROME INSERTS



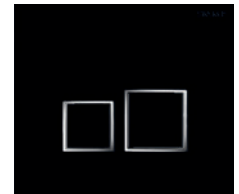
White/Bright Chrome



Stainless Steel/
Bright Chrome



Bright Chrome/
Matt Chrome



Black/Bright Chrome

SMARTY

ABS

CONTEMPORARY DESIGN



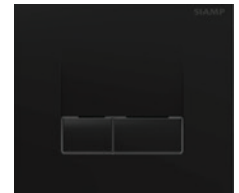
Bright Chrome



Matt Chrome



White



Black

SMART

METAL



Bright Chrome



Brushed Stainless Steel



YING YANG ABS



Bright Chrome



Bright Chrome/Matt Chrome



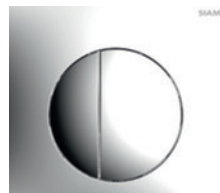
Matt Chrome/Bright Chrome

MOON ABS



Bright Chrome

MEDIA ABS



Bright Chrome

Special finishes available on request



BLACK

WHITE

BRONZE

NICKLE

BRASS

POLISHED

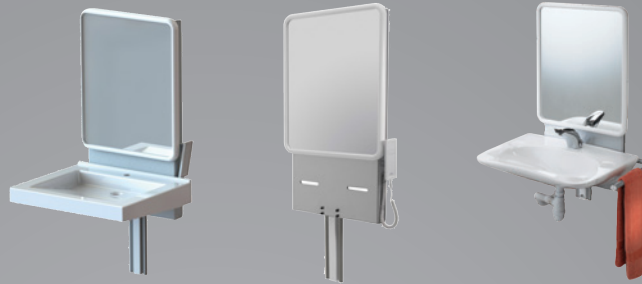
BRUSHED

WALL FRAME & FLUSH PLATE COMPATIBILITY

	INGENIO WALL FIXING	INGENIO SELF SUPPORTING	INGENIO BCM790	INGENIO BCU790	INGENIO CC790	BCM350	BCU350	BCM	INTRASLIM B INTRASLIM
CONTACTLESS	■	■							
SPHERE	■	■	■	■	■				
CUT	■	■	■	■	■				
PYRAMID	■	■	■	■	■				
REFLET 360	■	■	■	■	■	■	■	■	■
REFLET 90	■	■	■	■	■	■	■	■	■
ALBUM 360	■	■	■	■	■	■	■	■	■
ALBUM 90	■	■	■	■	■	■	■	■	■
SEGMENT	■	■	■	■	■	■	■	■	■
SQUARE	■	■	■	■	■	■	■	■	■
SMARTY	■	■	■	■	■	■	■	■	■
YIN YANG						■	■	■	■
MOON						■	■	■	■
MEDIA						■	■	■	■



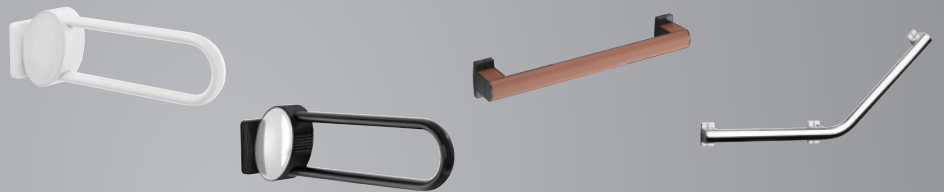
RISE AND FALL BASINS



SHOWER SEATS



GRAB BARS



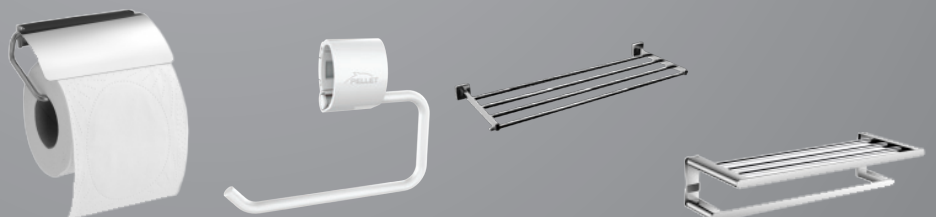
HAND DRIERS



DISPENSERS



ACCESSORIES







Unit 7
S:Park Business Park
Hamilton Road
Stockport
SK1 2AE

0161 681 2120



info@siamp.co.uk

www.siamp.co.uk